

# HIGH PLACES REALTY

PO BOX 207 664 South US Hwy 83  
Leakey, TX 78873



Property #001  
MLS #115147  
**\$569,500.**

MARY KAY WINDHAM  
GRI, SRES, RSPS, CNE



## Property Features

- Real County, Camp Wood, Texas
- Leakey Hills Tract 82
- 94.97 Acres
- Natural Hidden Spring
- Cave System
- Hunting, Hiking, Caving
- Expansive Hill Country Views

**MARY KAY WINDHAM**  
Owner/Broker

**HIGH PLACES REALTY**

Any time of the year is a great time to explore the Texas Hill Country, for a weekend or a lifetime. We count it a privilege to be able to help people like you own a part of it.

Office: 830-232-4408  
Cell: 830-374-7901  
Fax: 830-232-4409

[marykay@highplacesrealty.com](mailto:marykay@highplacesrealty.com)

Visit at:  
[www.highplacesrealty.com](http://www.highplacesrealty.com)

ALL INFORMATION CONTAINED HEREIN IS FROM SOURCES DEEMED RELIABLE, BUT IS NOT GUARANTEED BY THIS AGENCY AND IS SUBJECT TO CHANGE IN PRICE OR TERMS, CORRECTIONS, PRIOR SALE, OR WITHDRAWAL WITHOUT NOTICE.



**This 94.97 acres** should do the trick for those looking to find a secluded piece of property with long vistas and a variety of terrain to hike and explore. Located approximately 12 miles west of Leakey and accessed by a county maintained road and then a private road, this rugged acreage is truly for those adventure seekers looking for diverse terrain with long vistas over rolling hilltops. As you approach the property you will find a good amount of flat, tree covered land with lots of private road frontage along the highest ridge of the land. There you will find two cargo boxes for storage, a small sleeping cabin, septic and a non-working well. From base camp there is a relatively easy walk to a hillside cave that is large enough to stand up in with a couple of caverns that could be opened for exploration. It looks to be Obsidian veins running through the wall of the cave in the front room! The land then cascades into a massive canyon, replete with a wet weather creek and at least one active spring. We are currently in a drought, the likes of which we have not seen in many years, and the spring still has a few pools of water and lush fern growing around the solid rock bottom. This could possibly be dammed to create a swimming hole. The spring provides water for a large variety of wildlife in the area. The balance of the land then elevates to the top ridge of another hill. There are several blinds, feeders and traps that will convey with the sale. This acreage is representative of all the Hill Country has to offer and if that is what you are looking for you will not be disappointed!

**\$569,500.**







PREPARED FOR:  
Jimmy J. Fox, Jr.

SURVEYED ON THE GROUND:  
April 05, 2022

REAL COUNTY, TEXAS



NO.	DESCRIPTION	ACRES
1	Tract 82	94.07
2	Tract 81	45.15
3	Tract 80	54.00
4	Tract 79	54.00
5	Tract 78	54.00
6	Tract 77	54.00
7	Tract 76	54.00
8	Tract 75	54.00
9	Tract 74	54.00
10	Tract 73	54.00
11	Tract 72	54.00
12	Tract 71	54.00
13	Tract 70	54.00
14	Tract 69	54.00
15	Tract 68	54.00
16	Tract 67	54.00
17	Tract 66	54.00
18	Tract 65	54.00
19	Tract 64	54.00
20	Tract 63	54.00
21	Tract 62	54.00
22	Tract 61	54.00
23	Tract 60	54.00
24	Tract 59	54.00
25	Tract 58	54.00
26	Tract 57	54.00
27	Tract 56	54.00
28	Tract 55	54.00
29	Tract 54	54.00
30	Tract 53	54.00
31	Tract 52	54.00
32	Tract 51	54.00
33	Tract 50	54.00
34	Tract 49	54.00
35	Tract 48	54.00
36	Tract 47	54.00
37	Tract 46	54.00
38	Tract 45	54.00
39	Tract 44	54.00
40	Tract 43	54.00
41	Tract 42	54.00
42	Tract 41	54.00
43	Tract 40	54.00
44	Tract 39	54.00
45	Tract 38	54.00
46	Tract 37	54.00
47	Tract 36	54.00
48	Tract 35	54.00
49	Tract 34	54.00
50	Tract 33	54.00
51	Tract 32	54.00
52	Tract 31	54.00
53	Tract 30	54.00
54	Tract 29	54.00
55	Tract 28	54.00
56	Tract 27	54.00
57	Tract 26	54.00
58	Tract 25	54.00
59	Tract 24	54.00
60	Tract 23	54.00
61	Tract 22	54.00
62	Tract 21	54.00
63	Tract 20	54.00
64	Tract 19	54.00
65	Tract 18	54.00
66	Tract 17	54.00
67	Tract 16	54.00
68	Tract 15	54.00
69	Tract 14	54.00
70	Tract 13	54.00
71	Tract 12	54.00
72	Tract 11	54.00
73	Tract 10	54.00
74	Tract 9	54.00
75	Tract 8	54.00
76	Tract 7	54.00
77	Tract 6	54.00
78	Tract 5	54.00
79	Tract 4	54.00
80	Tract 3	54.00
81	Tract 2	54.00
82	Tract 1	54.00



54.00 Acres - Tract 80  
Vol. 28, Pg. 638 P.R.

54.00 Acres - Tract 79  
Vol. 28, Pg. 724 P.R.

50.23 Acres - Final Tract  
Vol. 105, Pg. 801 P.R.

45.15 Acres - Parcel G16  
Vol. 106, Pg. 201 A.P.R.

- CREIGHTON AND WATTS  
Vol. 1, Pg. 37 P.R.  
Vol. 1, Pg. 38 P.R.
- Overland Construction  
Vol. 1, Pg. 22 P.R.  
Vol. 12, Page 666 A.P.R.
- Building Site Apartments  
Vol. 27, Page 717 D.R.
- Road Easements  
Vol. 28, Pg. 121 D.R.  
Vol. 28, Pg. 200 D.R.  
Vol. 37, Pg. 722 D.R.  
Vol. 48, Pg. 234 D.R.
- Storm Easements  
Vol. 1, Pg. 179 D.R.

LEGEND:

SYMBOL	DESCRIPTION
(Solid line)	OVERHEAD ELECTRIC POWER
(Dashed line)	FENCE
(Dotted line)	ORIGINAL PUBLIC RECORDS
(Dashed line)	REAL COUNTY, TEXAS
(Dotted line)	REAL PROPERTY RECORDS
(Dashed line)	REAL COUNTY, TEXAS
(Dotted line)	PLAT RECORDS
(Dashed line)	REAL COUNTY, TEXAS
(Dotted line)	LOSS OF TRUST
(Dashed line)	REAL COUNTY, TEXAS
(Dotted line)	PLAT RECORDS
(Dashed line)	REAL COUNTY, TEXAS
(Dotted line)	DEEDMENT RECORDS
(Dashed line)	REAL COUNTY, TEXAS

Plat of Tract 82, Leakey Hills Ranch  
Subdivision, Section II, according to a plat  
thereof recorded in Volume 1, Page 35,  
Plat Records of Real County, Texas.

I hereby certify that the foregoing plat and accompanying field note descriptions were prepared from an actual survey conducted on the ground by me and to the best of my knowledge and belief is true and correct. Jimmy J. Fox, Jr. and Associates Surveying Company accepts responsibility for this plat being the original of one for which it was prepared.

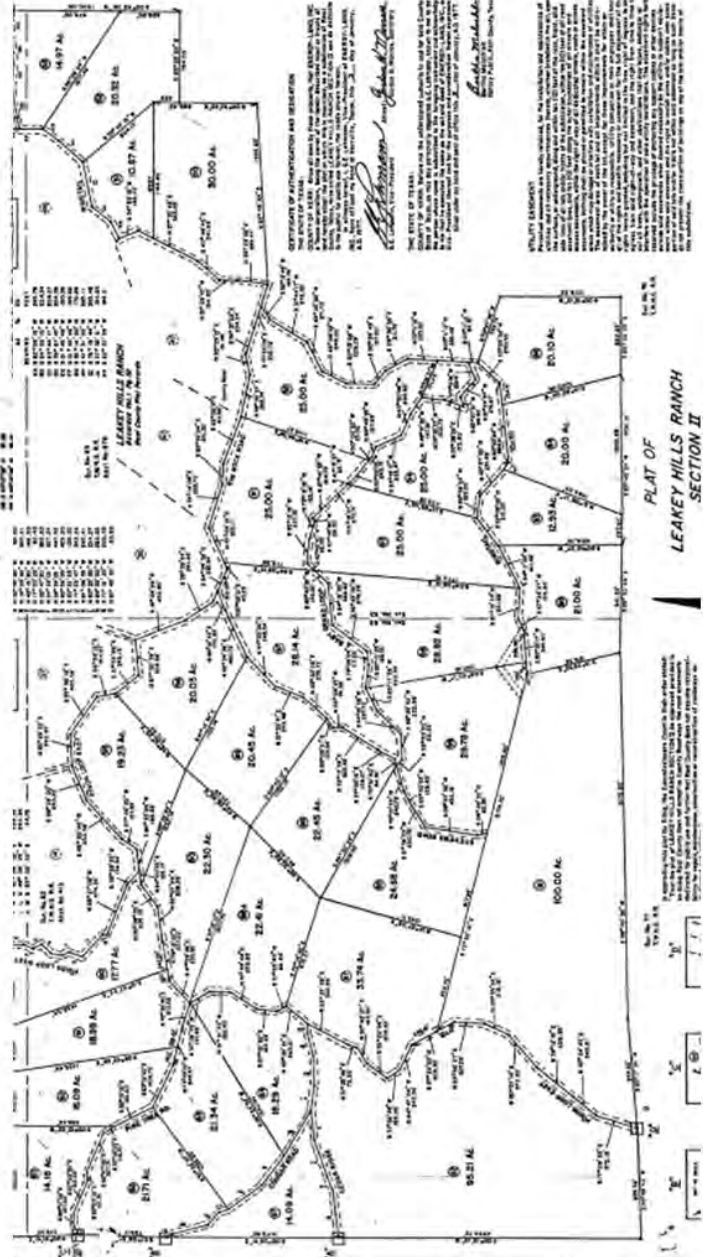
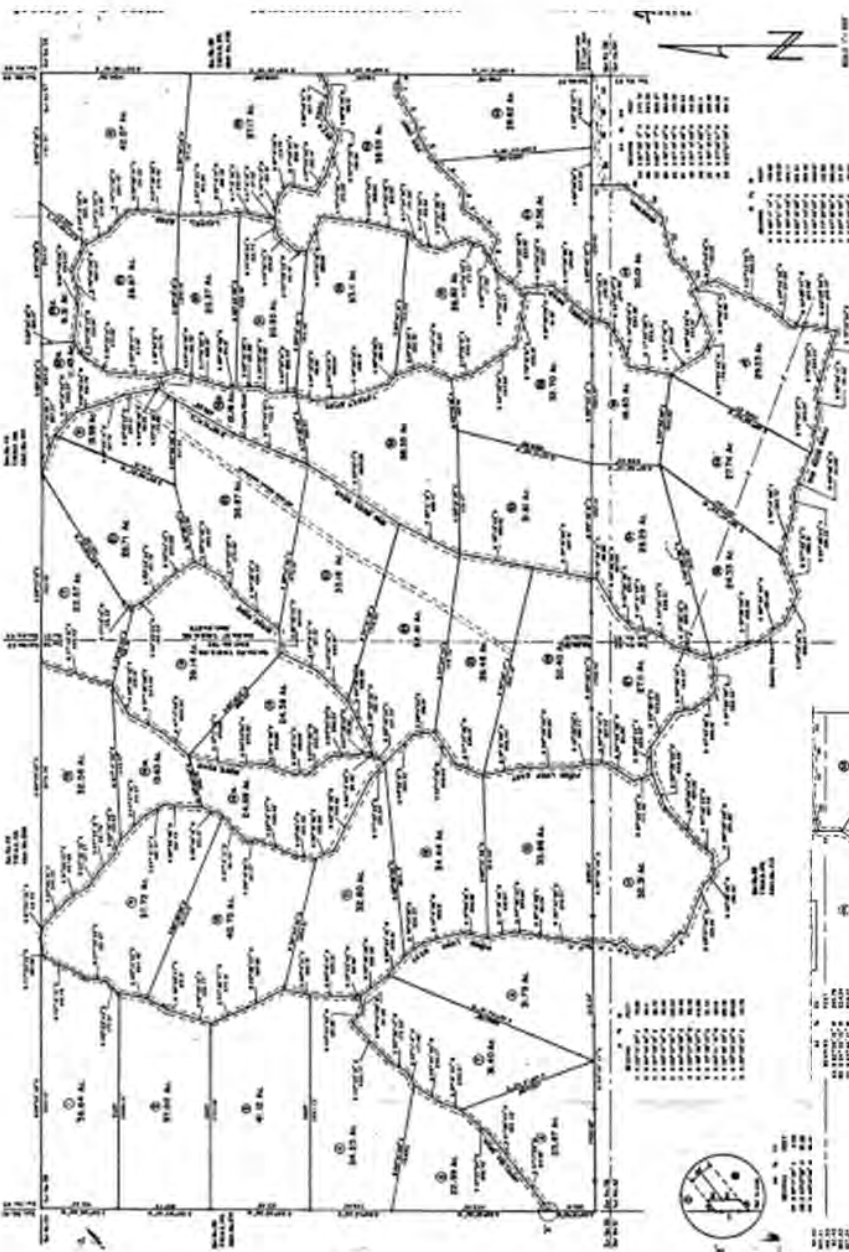
*Jimmy J. Fox, Jr.*  
Jimmy J. Fox, Jr., P.L.S., No. 5257  
Survey & Associates Surveying Co., Inc.  
Firm No. 10102229  
271 CR. 448  
Horseshoe Bend, Texas 75641  
(800) 425-6100  
(972) 293-1100

**MARY KAY WINDHAM**  
 Broker-Owner  
 GRI - SRES - RSPS - CNE  
 830-232-4408 Office  
 830-374-7901 Cell  
 830-232-4409 Fax  
 marykay@highplacesrealty.com  
 www.HighPlacesRealty.com



**HIGH PLACES REALTY**

PO Box 207 664 South US Hwy 83 Leakey, TX 78873



PLAT OF  
 LEANEY HILLS RANCH  
 SECTION II